

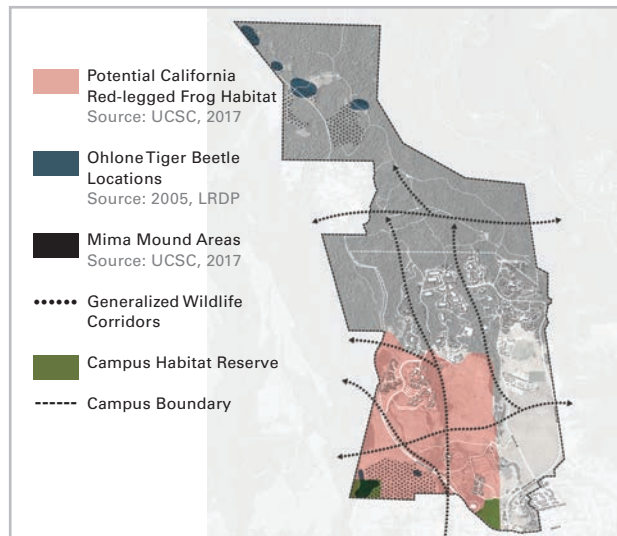
LONG-RANGE DEVELOPMENT PLAN

ECOLOGY+ ENVIRONMENT

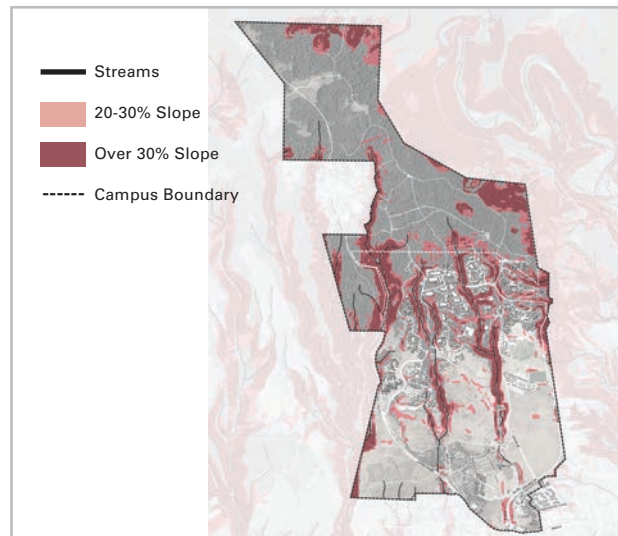
EXISTING CONDITIONS TODAY

- UC Santa Cruz stewards five natural reserves, including large swaths of the main campus.
- The Campus Natural Reserve covers 410 acres of protected land on campus. This land was set aside to preserve the natural environment for teaching, field research, and natural history interpretation.
- The UC Santa Cruz Arboretum, Farm, and Garden act as living laboratories and are open to the public.
- The Cowell Lime Works Historic District covers 30 acres at the main entrance to campus. It includes buildings and structures from the 19th century and is a vital resource to share with the community.
- The Amah Mutsun Relearning Program at the UC Santa Cruz Arboretum & Botanic Garden is a collaborative effort between the Amah Mutsun Tribal Band and the Garden to assist the Tribe in their efforts to recuperate and revitalize cultural knowledge and to practice environmental justice.

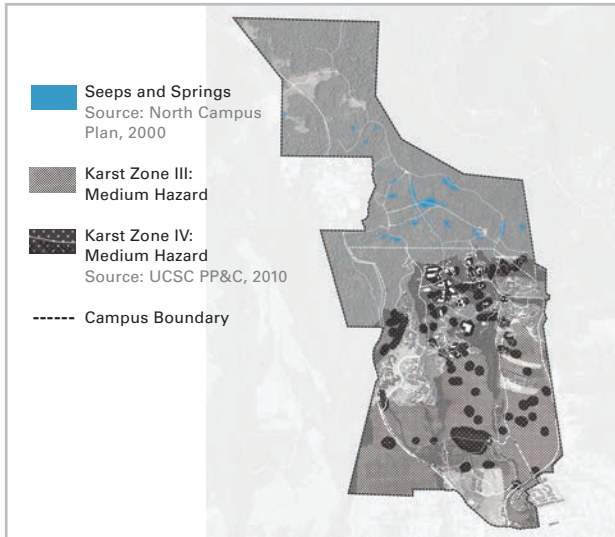
Sensitive Habitat



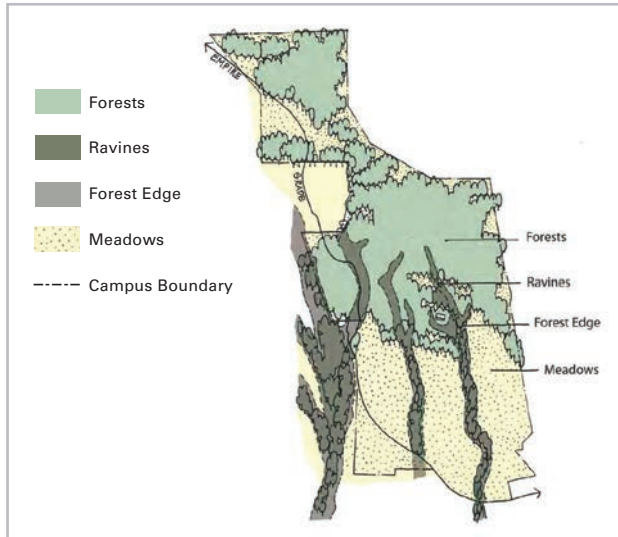
Steep Slopes



Geology



Campus Landscape



The Cowell Lime Works Historic District

